



INDOFINE Chemical Company, Inc.

121 Stryker Lane, Bldg. 30
Hillsborough, NJ 08844 USA
Phone: (908) 359-6778; Fax: (908) 359-1179

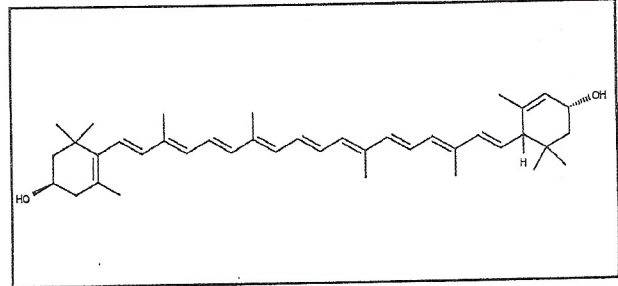
Certificate Of Analysis

020306S

LUTEIN

Lot No.: 22030170

CAS RN	127-40-2
MOL FORMULA	C ₄₀ H ₅₆ O ₂
MOL WEIGHT	568,89



TEST	METHOD	UNIT	SPECIFICATION	RESULT
Appearance	Visual		Powder	Conform
Melting point		°C	174-181	180-181
Potency*	UV	nm	421, 444, 472	Conform
	in methanol + 0,5% DCM		2520 +/- 100 at 444 nm	2500
	E1%		2320 +/- 100 at 472 nm	2300
Purity	HPLC	% area	≥ 92,0	95,0

*Despite the specific and intensive care taken with these products, they are very fragile.

We recommend that you confirm product purity by measuring the E1%

CHROMATOGRAPHIC PURITY / HPLC

Column : YMC-Carotenoid 250 x 4,6 mm - 5 µm

Mobile phase : 15/80/5 isocratic 3 min then 25/70/5 gradient in 17 min then 85/10/5 in 10 min

A:TMBE B:MeOH C:ACN

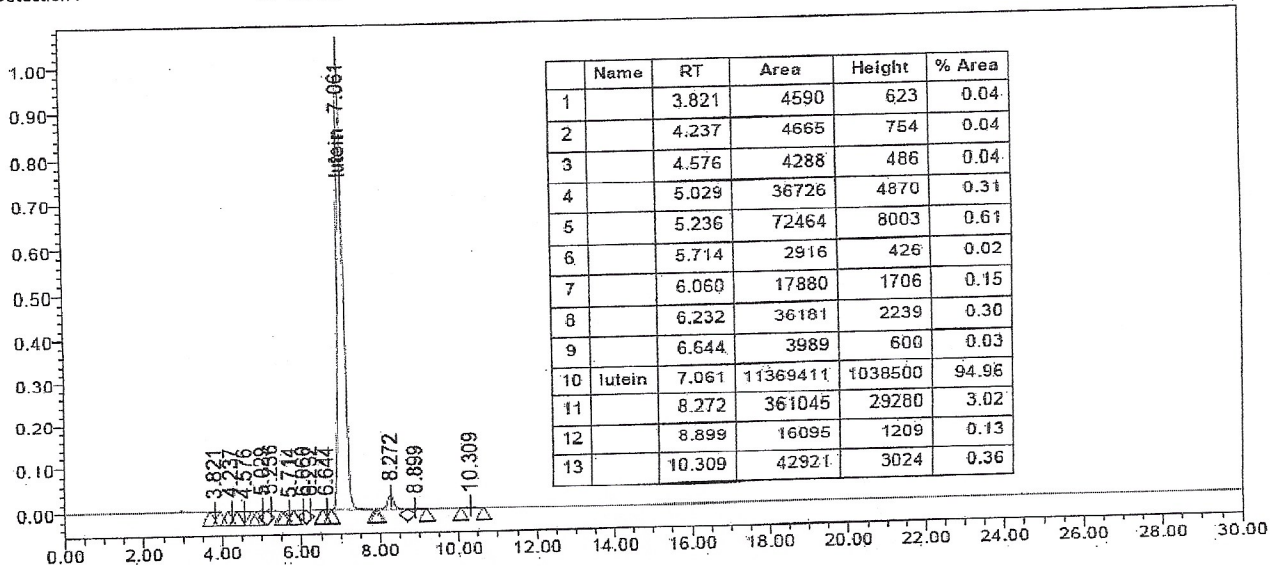
Flow rate 1 ml/min

Temperature 30°C

Injection volume 5 µl

Detection : UV 450 nm

Injection solvent DCM / Methanol (5/15)



LONG TERM STORAGE : Below -15°C in a dry and dark place